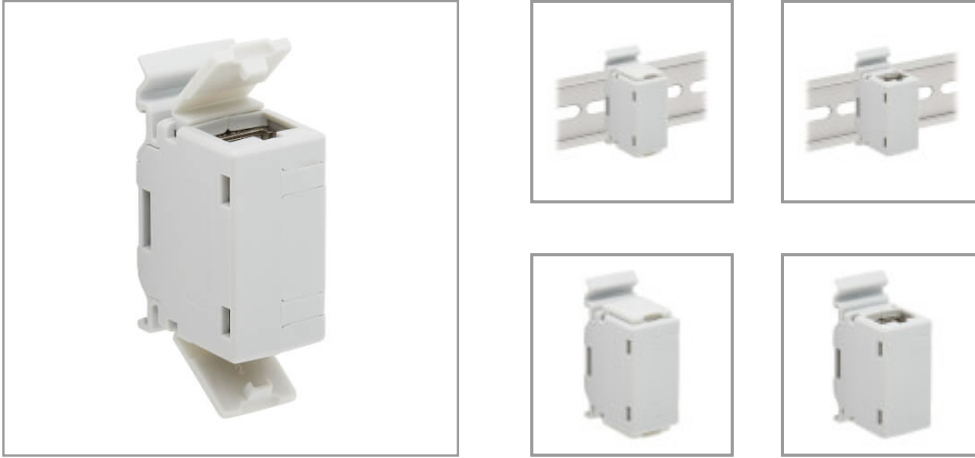


Cat6a Shielded In-Line DIN-Rail Mountable Snap-In Coupler (RJ45 F/F), TAA

MODEL NUMBER: N235-D01-SH-6A



Mounts to a DIN rail to connect 2 Cat6a cables in a premise wiring, telecom, data or Ethernet network application.

Features

Organizes High-Speed Network Cabling in Your Industrial DIN-Rail Installation

This DIN-rail-mountable coupler (F/F) connects two Cat6a network cables to create one longer cable. Its keystone design and dual RJ45 ports are ideal for feed-through patching. Made from durable plastic with a metal coupler housing, the N235-D01-SH-6A is quick and easy to install on a standard 35-millimeter DIN rail using the built-in mounting clip. The snap-in coupler is backward compatible with Cat6/5e/5 cables.

Supports Power over Ethernet to Save You Money and Give You More Installation Choices

Because this Cat6a coupler supports Type 4 (100W IEEE 802.3bt) PoE++, it can help deliver power to operate compatible data, voice, security and audio/video PoE devices, such as security cameras, VoIP telephones and access control devices. This saves you the expense and effort of purchasing, connecting and installing individual power supplies for each device. It also helps you install PoE devices in areas far away from AC outlets, such as poles or ceilings.

Fully Shielded to Protect Your Data and Equipment

The protective metal coupler housing reduces electromagnetic interference (EMI) and radio frequency interference (RFI) that can inflict hardware damage or data loss. This EMI/RFI filtering also helps your connected components perform better and last longer. Built-in dust covers on each end help protect unused RJ45 ports from dirt, moisture and other types of debris.

TAA-Compliant for GSA Schedule Purchases

The N235-D01-SH-6A is compliant with the Federal Trade Agreements Act (TAA), which makes it eligible for GSA (General Services Administration) Schedule and other federal procurement contracts.

Highlights

- RJ45 ports compatible with nearly all Cat6a, Cat6, Cat5e and Cat5 network cables
- Built-in mounting clip attaches easily to standard 35 mm DIN rail with no tools needed
- Fully shielded housing reduces EMI/RFI line noise to protect equipment and data
- Supports PoE++ to save you expense and effort of powering PoE devices individually
- Compliant with the Federal Trade Agreements Act (TAA) for GSA Schedule purchases

Package Includes

N235-D01-SH-6A Cat6a Shielded In-Line DIN-Rail Mountable Snap-In Coupler (RJ45 F/F)

Specifications

OVERVIEW	
UPC Code	037332277190
Product Type	RJ45 Coupler



Powering Business Worldwide



Technology	Cat6a
Firmware / Software Docs	
Offset Ports	No
CONNECTIONS	
Number of Ports	1
PoE Capability	100W (802.3bt)
Side A - Connector 1	RJ45 (FEMALE)
Side B - Connector 1	RJ45 (FEMALE)
Contact Plating	Gold
PoE Type	Type 4 High-Power (100W, IEEE 802.3bt)
PHYSICAL	
Color	Light Gray
Material of Construction	Plastic Casing: PC/PP (Polycarbonate/Polypropylene), Metal Coupler Housing: Zinc Alloy with Nickel Plating
Shipping Dimensions (hwd / in.)	0.75 x 4.50 x 8.00
Shipping Dimensions (hwd / cm)	1.90 x 11.43 x 20.32
Shipping Weight (lbs.)	0.06
Shipping Weight (kg)	0.03
Unit Dimensions (hwd / in.)	1.060 x 1.780 x 0.710
ENVIRONMENTAL	
Operating Temperature Range	-13° to 122°F (-25° to 50°C)
Storage Temperature Range	-40° to 158°F (-40° to 70°C)
Operating Humidity Range	10% to 85% RH, Non-Condensing
Storage Humidity Range	10% to 85% RH, Non-Condensing
COMMUNICATIONS	
Network Compatibility	10 Gbps
FEATURES & SPECIFICATIONS	
All-in-One Kit	No
Numbered Ports	No
Keystone Jacks	Yes
Built-in Cables	No
Color-Coded Connections	No
EIA/TIA 2/32 Spacing	No



Powering Business Worldwide



Labeled Ports	No
Down-Angled Ports	No
STANDARDS & COMPLIANCE	
Product Compliance	CE (Europe); REACH; RoHS; UKCA; Trade Agreements Act (TAA)
WARRANTY & SUPPORT	
Product Warranty Period (Worldwide)	Lifetime limited warranty

1000 Eaton Boulevard
Cleveland, OH 44122
United States
<https://tripplite.eaton.com>

© 2024 Eaton. All Rights Reserved.
Eaton is a registered trademark. All other trademarks
are the property of their respective owners.