

UDB 2X35/25 BU - Trunk line branch terminal



3071353

<https://www.phoenixcontact.com/us/products/3071353>

Please be informed that the data shown in this PDF document is generated from our online catalog. Please find the complete data in the user documentation. Our general terms of use for downloads are valid.



Trunk line branch terminal, nom. voltage: 400 V, nominal current: 125 A, number of connections: 4, number of positions: 1, connection method: Screw connection, 1 level, Rated cross section: 35 mm², cross section: 10 mm² - 35 mm², Screw connection, 2nd level, cross section: 1.5 mm² - 25 mm², mounting type: NS 35/7,5, NS 35/15, color: blue

Your advantages

- The branch terminal is suitable for the simple voltage pick-off of main supply cables
- Conformance with DIN VDE 0603-2/EN 60998-1

Commercial data

Item number	3071353
Packing unit	5 pc
Minimum order quantity	5 pc
Sales key	BE12
Product key	BE1213
Catalog page	Page 581 (C-1-2019)
GTIN	4046356735988
Weight per piece (including packing)	80.03 g
Weight per piece (excluding packing)	80.03 g
Customs tariff number	85369010
Country of origin	DE

UDB 2X35/25 BU - Trunk line branch terminal



3071353

<https://www.phoenixcontact.com/us/products/3071353>

Technical data

Notes

General	Up to 3 terminal blocks alignable
---------	-----------------------------------

Product properties

Product type	Feed-through terminal block
Number of positions	1
Number of connections	4
Number of rows	1
Potentials	1

Insulation characteristics

Overvoltage category	III
Degree of pollution	3

Electrical properties

Rated surge voltage	8 kV
Maximum power dissipation for nominal condition	4.06 W

Connection data

Number of connections per level	4
Nominal cross section	35 mm ²

1 level

Screw thread	M6/M8
Tightening torque	... 4 Nm
Stripping length	25 mm
Connection in acc. with standard	IEC 60998-1
Conductor cross section rigid	10 mm ² ... 35 mm ²
Cross section AWG	6 ... 2 (converted acc. to IEC)
Conductor cross section flexible	10 mm ² ... 25 mm ²
Conductor cross section, flexible [AWG]	6 ... 4 (converted acc. to IEC)
Conductor cross-section flexible (ferrule without plastic sleeve)	10 mm ² ... 25 mm ²
Flexible conductor cross section (ferrule with plastic sleeve)	10 mm ² ... 16 mm ²
Nominal current	125 A
Maximum load current	125 A
Nominal voltage	400 V (max. 1000 V)
Note	Use ferrules for stranded conductors
Nominal cross section	35 mm ²

2nd level

Stripping length	25 mm
Connection in acc. with standard	IEC 60998-1
Conductor cross section rigid	1.5 mm ² ... 25 mm ²

UDB 2X35/25 BU - Trunk line branch terminal



3071353

<https://www.phoenixcontact.com/us/products/3071353>

Conductor cross-section flexible (ferrule without plastic sleeve)	1.5 mm ² ... 16 mm ²
Flexible conductor cross section (ferrule with plastic sleeve)	1.5 mm ² ... 10 mm ²

Dimensions

Width	27 mm
Height	55 mm
Depth on NS 35/7,5	46 mm
Depth on NS 35/15	53.5 mm

Material specifications

Color	blue
Flammability rating according to UL 94	V0
Insulating material group	I
Insulating material	PA

Mechanical properties

Mechanical data

Open side panel	No
-----------------	----

Environmental and real-life conditions

Ambient conditions

Ambient temperature (operation)	-60 °C ... 110 °C (Operating temperature range incl. self-heating; for max. short-term operating temperature, see RTI Elec.)
Ambient temperature (storage/transport)	-25 °C ... 60 °C (for a short time, no longer than 24 h, -60°C to +70°C)
Ambient temperature (assembly)	-5 °C ... 70 °C
Ambient temperature (actuation)	-5 °C ... 70 °C
Permissible humidity (operation)	20 % ... 90 %
Permissible humidity (storage/transport)	30 % ... 70 %

Standards and regulations

Connection in acc. with standard	IEC 60998-1
	IEC 60998-1

Mounting

Mounting type	NS 35/7,5
	NS 35/15

UDB 2X35/25 BU - Trunk line branch terminal



3071353

<https://www.phoenixcontact.com/us/products/3071353>

Drawings

Circuit diagram



UDB 2X35/25 BU - Trunk line branch terminal



3071353

<https://www.phoenixcontact.com/us/products/3071353>

Approvals

To download certificates, visit the product detail page: <https://www.phoenixcontact.com/us/products/3071353>



EAC

Approval ID: RU C-DE.A*30.B.01742



VDE Zeichengenehmigung

Approval ID: 40055082

UDB 2X35/25 BU - Trunk line branch terminal



3071353

<https://www.phoenixcontact.com/us/products/3071353>

Classifications

ECLASS

ECLASS-11.0	27141120
ECLASS-13.0	27250119

ETIM

ETIM 9.0	EC000897
----------	----------

UNSPSC

UNSPSC 21.0	39121400
-------------	----------

UDB 2X35/25 BU - Trunk line branch terminal



3071353

<https://www.phoenixcontact.com/us/products/3071353>

Environmental product compliance

EU RoHS

Fulfills EU RoHS substance requirements	Yes, No exemptions
---	--------------------

China RoHS

Environment friendly use period (EFUP)	EFUP-E
	No hazardous substances above the limits

EU REACH SVHC

REACH candidate substance (CAS No.)	No substance above 0.1 wt%
-------------------------------------	----------------------------

UDB 2X35/25 BU - Trunk line branch terminal



3071353

<https://www.phoenixcontact.com/us/products/3071353>

Accessories

NS 35/ 7,5 PERF 2000MM - DIN rail perforated

0801733

<https://www.phoenixcontact.com/us/products/0801733>



DIN rail perforated, Pack of 25 (50 m), acc. to EN 60715, material: Steel, galvanized, passivated with a thick layer, Standard profile, color: silver

NS 35/ 7,5 UNPERF 2000MM - DIN rail, unperforated

0801681

<https://www.phoenixcontact.com/us/products/0801681>



DIN rail, unperforated, Pack of 25 (50 m), acc. to EN 60715, material: Steel, galvanized, passivated with a thick layer, Standard profile, color: silver

UDB 2X35/25 BU - Trunk line branch terminal



3071353

<https://www.phoenixcontact.com/us/products/3071353>

NS 35/ 7,5 WH PERF 2000MM - DIN rail perforated

1204119

<https://www.phoenixcontact.com/us/products/1204119>



DIN rail perforated, Pack of 25 (50 m), acc. to EN 60715, material: Steel, Galvanized, white passivated, Standard profile, color: silver

NS 35/ 7,5 WH UNPERF 2000MM-VPE 10 - DIN rail, unperforated

1204122

<https://www.phoenixcontact.com/us/products/1204122>



DIN rail, unperforated, Pack of 10 (20 m), acc. to EN 60715, material: Steel, Galvanized, white passivated, Standard profile, color: silver

UDB 2X35/25 BU - Trunk line branch terminal



3071353

<https://www.phoenixcontact.com/us/products/3071353>

NS 35/ 7,5 AL UNPERF 2000MM - DIN rail, unperforated

0801704

<https://www.phoenixcontact.com/us/products/0801704>



DIN rail, unperforated, Pack of 25 (50 m), acc. to EN 60715, material: Aluminum, uncoated, Standard profile, color: silver

NS 35/ 7,5 ZN PERF 2000MM - DIN rail perforated

1206421

<https://www.phoenixcontact.com/us/products/1206421>



DIN rail perforated, Pack of 25 (50 m), acc. to EN 60715, material: Steel, galvanized, Standard profile, color: silver

UDB 2X35/25 BU - Trunk line branch terminal

3071353

<https://www.phoenixcontact.com/us/products/3071353>

NS 35/ 7,5 ZN UNPERF 2000MM - DIN rail, unperforated

1206434

<https://www.phoenixcontact.com/us/products/1206434>



DIN rail, unperforated, Pack of 25 (50 m), acc. to EN 60715, material: Steel, galvanized, Standard profile, color: silver

NS 35/ 7,5 CU UNPERF 2000MM-VPE 10 - DIN rail, unperforated

0801762

<https://www.phoenixcontact.com/us/products/0801762>



DIN rail, unperforated, Pack of 10 (20 m), acc. to EN 60715, material: Copper, uncoated, Standard profile, color: copper-colored

UDB 2X35/25 BU - Trunk line branch terminal

3071353

<https://www.phoenixcontact.com/us/products/3071353>



NS 35/ 7,5 CAP - End cap

1206560

<https://www.phoenixcontact.com/us/products/1206560>

DIN rail end piece, for DIN rail NS 35/7.5



NS 35/15 PERF 2000MM - DIN rail perforated

1201730

<https://www.phoenixcontact.com/us/products/1201730>



DIN rail perforated, Pack of 25 (50 m), similar to EN 60715, material: Steel, galvanized, passivated with a thick layer, Standard profile, color: silver

UDB 2X35/25 BU - Trunk line branch terminal

3071353

<https://www.phoenixcontact.com/us/products/3071353>

NS 35/15 UNPERF 2000MM - DIN rail, unperforated

1201714

<https://www.phoenixcontact.com/us/products/1201714>



DIN rail, unperforated, Pack of 25 (50 m), similar to EN 60715, material: Steel, galvanized, passivated with a thick layer, Standard profile, color: silver

NS 35/15 WH PERF 2000MM - DIN rail perforated

0806602

<https://www.phoenixcontact.com/us/products/0806602>



DIN rail perforated, Pack of 25 (50 m), similar to EN 60715, material: Steel, Galvanized, white passivated, Standard profile, color: white

UDB 2X35/25 BU - Trunk line branch terminal

3071353

<https://www.phoenixcontact.com/us/products/3071353>

NS 35/15 WH UNPERF 2000MM-VPE 10 - DIN rail, unperforated

1204135

<https://www.phoenixcontact.com/us/products/1204135>



DIN rail, unperforated, Pack of 10 (20 m), similar to EN 60715, material: Steel, Galvanized, white passivated, Standard profile, color: silver

NS 35/15 AL UNPERF 2000MM - DIN rail, unperforated

1201756

<https://www.phoenixcontact.com/us/products/1201756>



DIN rail, unperforated, similar to EN 60715, material: Aluminum, uncoated, Standard profile, color: silver

UDB 2X35/25 BU - Trunk line branch terminal

3071353

<https://www.phoenixcontact.com/us/products/3071353>

NS 35/15 ZN PERF 2000MM - DIN rail perforated

1206599

<https://www.phoenixcontact.com/us/products/1206599>



DIN rail perforated, Pack of 25 (50 m), similar to EN 60715, material: Steel, galvanized, Standard profile, color: silver

NS 35/15 ZN UNPERF 2000MM - DIN rail, unperforated

1206586

<https://www.phoenixcontact.com/us/products/1206586>



DIN rail, unperforated, Pack of 25 (50 m), similar to EN 60715, material: Steel, galvanized, Standard profile, color: silver

UDB 2X35/25 BU - Trunk line branch terminal

3071353

<https://www.phoenixcontact.com/us/products/3071353>

NS 35/15 CU UNPERF 2000MM-VPE 10 - DIN rail, unperforated

1201895

<https://www.phoenixcontact.com/us/products/1201895>



DIN rail, unperforated, Pack of 10 (20 m), similar to EN 60715, material: Copper, uncoated, Standard profile, color: copper-colored

NS 35/15 CAP - End cap

1206573

<https://www.phoenixcontact.com/us/products/1206573>

DIN rail end piece, for DIN rail NS 35/15



UDB 2X35/25 BU - Trunk line branch terminal

3071353

<https://www.phoenixcontact.com/us/products/3071353>



NS 35/15-2,3 UNPERF 2000MM-VPE 10 - DIN rail, unperforated

1201798

<https://www.phoenixcontact.com/us/products/1201798>



DIN rail, unperforated, Pack of 10 (20 m), acc. to EN 60715, material: Steel, galvanized, passivated with a thick layer, Standard profile 2.3 mm, color: silver

CLIPFIX 35 - End bracket

3022218

<https://www.phoenixcontact.com/us/products/3022218>



Quick mounting end clamp for NS 35/7,5 DIN rail or NS 35/15 DIN rail, with marking option, width: 9.5 mm, color: gray

UDB 2X35/25 BU - Trunk line branch terminal

3071353

<https://www.phoenixcontact.com/us/products/3071353>

CLIPFIX 35-5 - End bracket

3022276

<https://www.phoenixcontact.com/us/products/3022276>

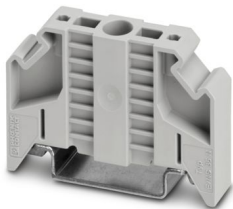


Quick mounting end clamp for NS 35/7,5 DIN rail or NS 35/15 DIN rail, with marking option, with parking option for FBS...5, FBS...6, KSS 5, KSS 6, width: 5.15 mm, color: gray

E/NS 35 N - End bracket

0800886

<https://www.phoenixcontact.com/us/products/0800886>



End clamp, width: 9.5 mm, color: gray

UDB 2X35/25 BU - Trunk line branch terminal

3071353

<https://www.phoenixcontact.com/us/products/3071353>

SF-PZSL 2-100 S-VDE - Screwdriver

1212700

<https://www.phoenixcontact.com/us/products/1212700>



Screwdriver, positive/negative PZ/bladed, VDE insulated, size: PZ 2 x 100, 2-component grip, with non-slip grip

CRIMPFOX 25R - Crimping pliers

1212039

<https://www.phoenixcontact.com/us/products/1212039>



Crimping pliers, for ferrules without insulating collar according to DIN 46228 Part 1 and ferrules with insulating collar according to DIN 46228 Part 4, 10 mm² ... 25 mm², lateral entry, WM crimp

UDB 2X35/25 BU - Trunk line branch terminal



3071353

<https://www.phoenixcontact.com/us/products/3071353>

CRIMPFOX 6T-F - Crimping pliers

1212038

<https://www.phoenixcontact.com/us/products/1212038>



Crimping pliers, for ferrules without insulating collar according to DIN 46228 Part 1 and ferrules with insulating collar according to DIN 46228 Part 4, 0.25 mm² ... 6 mm², front entry, trapezoidal crimp

A 10 -18 - Ferrule

3200344

<https://www.phoenixcontact.com/us/products/3200344>



Ferrule, color: silver

UDB 2X35/25 BU - Trunk line branch terminal

3071353

<https://www.phoenixcontact.com/us/products/3071353>

A 16 -12 - Ferrule

3200425

<https://www.phoenixcontact.com/us/products/3200425>

Ferrule, color: silver



A 25 -20 - Ferrule

3200386

<https://www.phoenixcontact.com/us/products/3200386>

Ferrule, color: silver



UDB 2X35/25 BU - Trunk line branch terminal



3071353

<https://www.phoenixcontact.com/us/products/3071353>

A 35 -20 - Ferrule

3200409

<https://www.phoenixcontact.com/us/products/3200409>

Ferrule, color: silver



AI 4 -18 GY - Ferrule

3200593

<https://www.phoenixcontact.com/us/products/3200593>

Ferrule, sleeve length: 18 mm, color: gray



UDB 2X35/25 BU - Trunk line branch terminal

3071353

<https://www.phoenixcontact.com/us/products/3071353>

AI 6 -18 YE - Ferrule

3200603

<https://www.phoenixcontact.com/us/products/3200603>



Ferrule, sleeve length: 18 mm, color: yellow

AI 10 -18 RD - Ferrule

3200616

<https://www.phoenixcontact.com/us/products/3200616>



Ferrule, sleeve length: 18 mm, color: red

UDB 2X35/25 BU - Trunk line branch terminal

3071353

<https://www.phoenixcontact.com/us/products/3071353>

AI 16 -18 BU - Ferrule

3200629

<https://www.phoenixcontact.com/us/products/3200629>

Ferrule, sleeve length: 18 mm, color: blue



A 4 -18 - Ferrule

3202834

<https://www.phoenixcontact.com/us/products/3202834>

Ferrule, color: silver



UDB 2X35/25 BU - Trunk line branch terminal



3071353

<https://www.phoenixcontact.com/us/products/3071353>

A 6 -12 - Ferrule

3200328

<https://www.phoenixcontact.com/us/products/3200328>

Ferrule, color: silver



Phoenix Contact 2024 © - all rights reserved

<https://www.phoenixcontact.com>

Phoenix Contact USA
586 Fulling Mill Road
Middletown, PA 17057, United States
(+717) 944-1300
info@phoenixcon.com