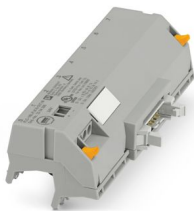


# PLC-V8L/FLK14/OUT/M - System connection



2304306  
<https://www.phoenixcontact.com/us/products/2304306>

Please be informed that the data shown in this PDF document is generated from our online catalog. Please find the complete data in the user documentation. Our general terms of use for downloads are valid.



V8 adapter for 8 x PLC-INTERFACE (14 mm), controller: PLC system cabling of output cards, connection 1: IDC/FLK pin strip 1x 14-position, connection 2: Plug-in connection (Can be snapped onto 8x PLC-INTERFACE terminals), connection 3: Screw connection 1x 2-position, number of channels: 8, control logic: minusschaltend

## Commercial data

Item number	2304306
Packing unit	1 pc
Minimum order quantity	1 pc
Sales key	C421
Product key	CK21C1
Catalog page	Page 427 (C-5-2019)
GTIN	4017918932916
Weight per piece (including packing)	125.5 g
Weight per piece (excluding packing)	76 g
Customs tariff number	85389099
Country of origin	DE

# PLC-V8L/FLK14/OUT/M - System connection



2304306

<https://www.phoenixcontact.com/us/products/2304306>

## Technical data

### Product properties

Product type	Interface module
Product family	PLC-INTERFACE
Number of positions	14
No. of channels	8

### Insulation characteristics

Insulation	Functional insulation
------------	-----------------------

### Insulation characteristics: Air clearances and creepage distances

Insulation	Functional insulation
Overvoltage category	II
Pollution degree	2

### Electrical properties

Operating voltage range	18 V DC ... 33.6 V DC
Current (per branch)	≤ 1 A
Current (Power supply)	≤ 3 A

### Air clearances and creepage distances

Rated insulation voltage	50 V
Rated surge voltage	0.5 kV (1.2/50 µs)

### Supported controller SIEMENS S7-1500

Suitable I/O card	6ES7522-1BP50-0AA0
	6ES7523-1BP50-0AA0 (DQ32)

### Supported controller ABB S800 I/O

Suitable I/O card	DO814
	DO818

### Supported controller MITSUBISHI MELSEC Q

Suitable I/O card	QX42
	QX42-S1
	QH42P

### Supported controller MITSUBISHI MELSEC L

Suitable I/O card	LY41NT1P
	LY42NT1P

### Connection data

#### Connection 1 (control level)

Connection in acc. with standard	IEC 60603-13
Connection method	IDC/FLK pin strip

# PLC-V8L/FLK14/OUT/M - System connection



2304306

<https://www.phoenixcontact.com/us/products/2304306>

Number of connections	1
Number of positions	14
Insertion/withdrawal cycles	> 50
Pitch	2.54 mm

## Connection 2 (field level)

Connection method	Plug-in connection
Note	Can be snapped onto 8x PLC-INTERFACE terminals

## Connection 3 (supply)

Connection method	Screw connection
Stripping length	8 mm
Screw thread	M3
Number of connections	1
Number of positions	2
Conductor cross section rigid	0.2 mm <sup>2</sup> ... 4 mm <sup>2</sup>
Conductor cross section flexible	0.2 mm <sup>2</sup> ... 2.5 mm <sup>2</sup>
Conductor cross section AWG	24 ... 12

## Signaling

Status display present	Yes
Operating voltage display	Green LED

## Dimensions

### Item dimensions

Width	112.3 mm
Height	41 mm
Depth	56.17 mm

## Material specifications

Color	gray (RAL 7042)
Flammability rating according to UL 94	V0
Housing insulation material	Polyamide PA non-reinforced

## Environmental and real-life conditions

### Ambient conditions

Degree of protection (Module)	IP20
Degree of protection (Installation location)	≥ IP54
Ambient temperature (operation)	-40 °C ... 70 °C
Ambient temperature (storage/transport)	-40 °C ... 70 °C
Altitude	≤ 2000 m

## Approvals

CE

# PLC-V8L/FLK14/OUT/M - System connection



2304306

<https://www.phoenixcontact.com/us/products/2304306>

Certificate	CE-compliant
-------------	--------------

## UKCA

Certificate	UKCA-compliant
-------------	----------------

## UL, USA/Canada

Identification	Class I, Div. 2, Groups A, B, C, D T4
----------------	---------------------------------------

## UL, Canada

Identification	Class I, Zone 2, Ex ec IIC Gc T4 X
----------------	------------------------------------

## UL, USA

Identification	Class I, Zone 2, AEx ec IIC T4
----------------	--------------------------------

## Shipbuilding approval

Certificate	TAE0000196
-------------	------------

## DNV GL data

Temperature	D
Humidity	A
Vibration	C
EMC	B
Enclosure	Required protection according to the Rules shall be provided upon installation on board

## EMC data

Low Voltage Directive	Conformance with Low Voltage Directive
Electromagnetic compatibility	Conformance with EMC directive

## Standards and regulations

### Air clearances and creepage distances

Standards/regulations	EN IEC 60664-1
-----------------------	----------------

## Mounting

Mounting type	Plug-on assembly
Assembly instructions	in rows with zero spacing
Mounting position	any

## Notes

General	For proper use, the specifications of the installation directive (see Downloads) must be observed. For applications or use with third-party products, the specifications, and the safety and warning instructions of the respective third-party manufacturer must also be met.
---------	--

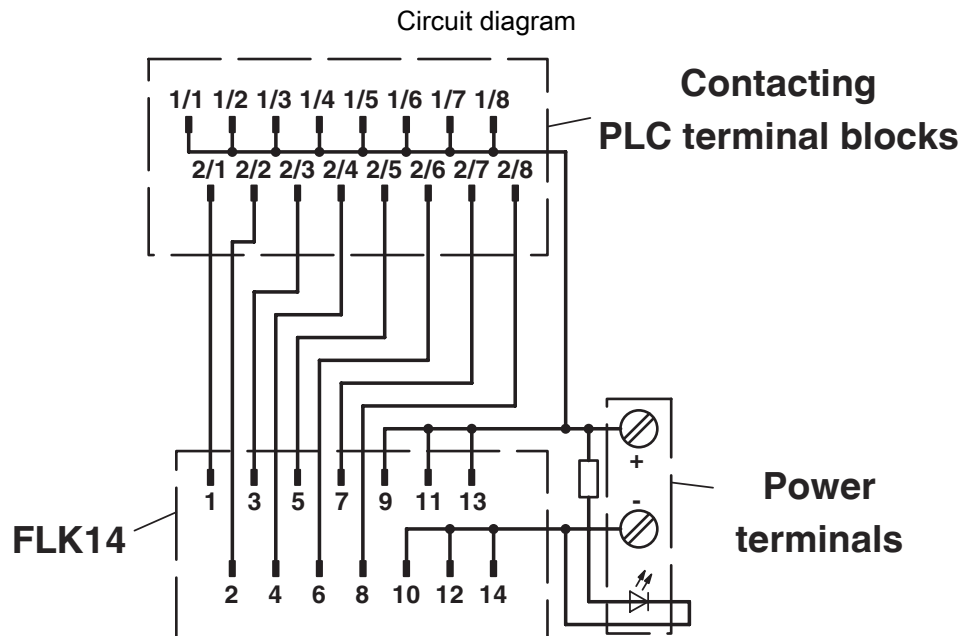
# PLC-V8L/FLK14/OUT/M - System connection



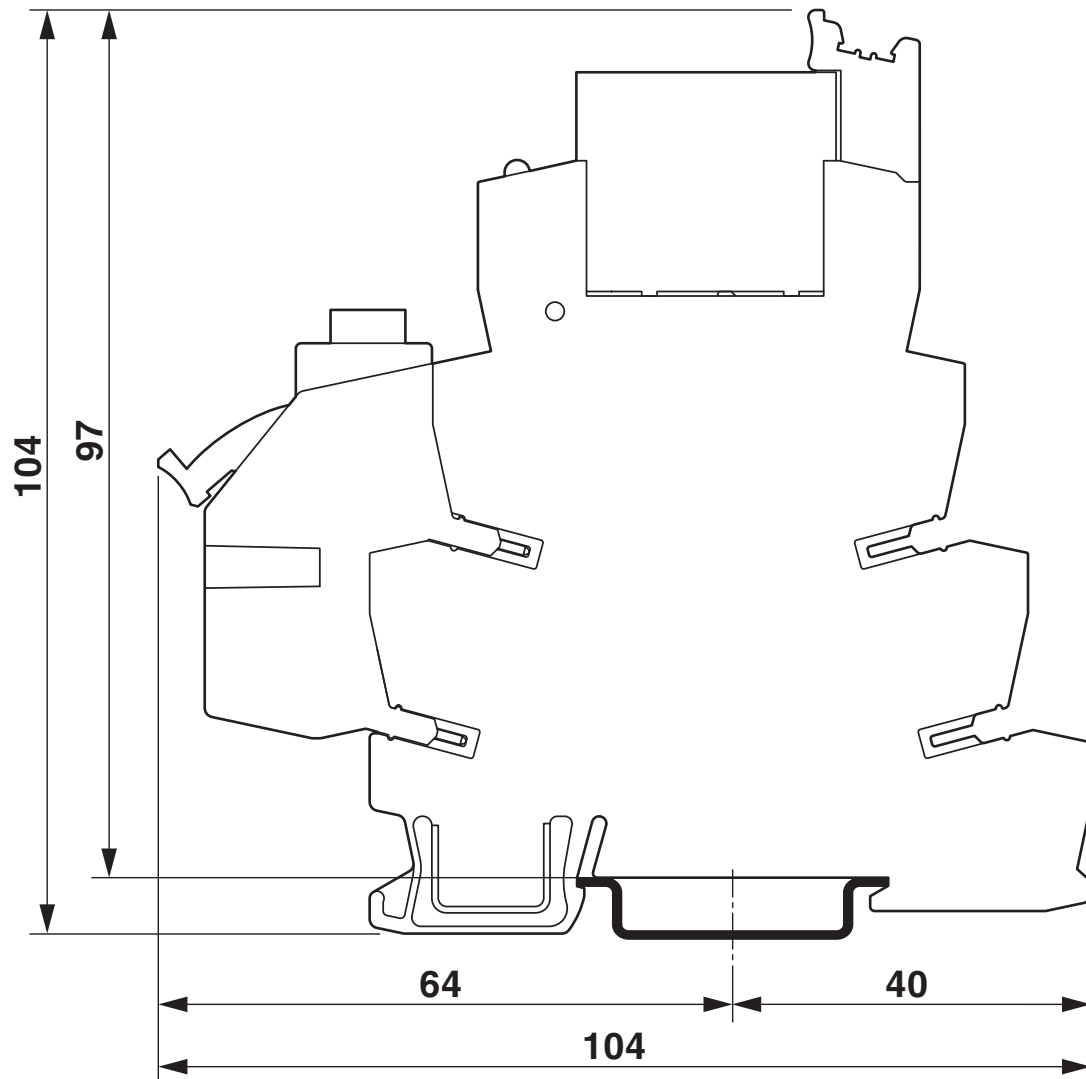
2304306

<https://www.phoenixcontact.com/us/products/2304306>

## Drawings



Dimensional drawing



# PLC-V8L/FLK14/OUT/M - System connection





2304306


<https://www.phoenixcontact.com/us/products/2304306>


## Approvals


To download certificates, visit the product detail page: <https://www.phoenixcontact.com/us/products/2304306>

 <b>cUL Recognized</b> Approval ID: FILE E 238705				
	Nominal voltage $U_N$	Nominal current $I_N$	Cross section AWG	Cross section $\text{mm}^2$
	24 V	1 A	-	-

 <b>UL Recognized</b> Approval ID: FILE E 238705				
	Nominal voltage $U_N$	Nominal current $I_N$	Cross section AWG	Cross section $\text{mm}^2$
	24 V	1 A	-	-

 <b>DNV GL</b> Approval ID: TAE0000196				
---	--	--	--	--

 <b>UL Listed</b> Approval ID: FILE E 172140				
--	--	--	--	--

 <b>cUL Listed</b> Approval ID: FILE E 172140				
---	--	--	--	--

 <b>cUL Listed</b> Approval ID: FILE E 199827				
---	--	--	--	--

 <b>UL Listed</b> Approval ID: FILE E 199827				
--	--	--	--	--

<b>cULus Recognized</b>				
-------------------------	--	--	--	--

<b>cULus Listed</b>				
---------------------	--	--	--	--

<b>cULus Listed</b>				
---------------------	--	--	--	--

# PLC-V8L/FLK14/OUT/M - System connection



2304306

<https://www.phoenixcontact.com/us/products/2304306>

## Classifications

### ECLASS

ECLASS-11.0	27141152
ECLASS-13.0	27141152
ECLASS-12.0	27141152

### ETIM

ETIM 9.0	EC002780
----------	----------

### UNSPSC

UNSPSC 21.0	39121400
-------------	----------



Environmental product compliance

EU RoHS

Fulfills EU RoHS substance requirements	Yes
Exemption	6(c)

China RoHS

Environment friendly use period (EFUP)	EFUP-50
	An article-related China RoHS declaration table can be found in the download area for the respective article under "Manufacturer declaration". For all articles with EFUP-E, no China RoHS declaration table issued and required.

EU REACH SVHC

REACH candidate substance (CAS No.)	Hexahydromethylphthalic anhydride(CAS: n/a)
	Lead(CAS: 7439-92-1)
SCIP	4ab30cf3-0e55-4654-a447-63bfa0105459

# PLC-V8L/FLK14/OUT/M - System connection



2304306

<https://www.phoenixcontact.com/us/products/2304306>

## Mandatory accessories

### PLC-RPT- 24DC/21HC - Relay Module

2900291

<https://www.phoenixcontact.com/us/products/2900291>



PLC-INTERFACE for high continuous currents, consisting of PLC-BPT.../21 HC basic terminal block with Push-in connection and plug-in miniature relay, for mounting on DIN rail NS 35/7,5, limiting continuous current up to 10 A, 1 changeover contact, input voltage 24 V DC

---

### PLC-RSC- 24DC/21HC - Relay Module

2967620

<https://www.phoenixcontact.com/us/products/2967620>



PLC-INTERFACE for high continuous currents, consisting of PLC-BSC.../21 HC basic terminal block with screw connection and plug-in miniature relay, for mounting on NS 35/7,5 DIN rail, limiting continuous current up to 10 A, 1 changeover contact, input voltage 24 V DC

# PLC-V8L/FLK14/OUT/M - System connection



2304306

<https://www.phoenixcontact.com/us/products/2304306>

## PLC-BPT- 24DC/21-21 - Relay base

2900283

<https://www.phoenixcontact.com/us/products/2900283>



14 mm PLC basic terminal block with Push-in connection, without relay or solid-state relay, for mounting on DIN rail NS 35/7,5, 2 changeover contacts, input voltage 24 V DC

---

## PLC-RSC- 24DC/21-21 - Relay Module

2967060

<https://www.phoenixcontact.com/us/products/2967060>



PLC-INTERFACE, consisting of basic terminal block PLC-BSC.../21 with screw connection and plug-in miniature relay with power contact, for assembly on DIN rail NS 35/7,5, 2 changeover contacts, input voltage 24 V DC

# PLC-V8L/FLK14/OUT/M - System connection



2304306

<https://www.phoenixcontact.com/us/products/2304306>

## PLC-RPT- 24DC/21-21AU - Relay Module

2900338

<https://www.phoenixcontact.com/us/products/2900338>



PLC-INTERFACE, consisting of PLC-BPT.../21-21 basic terminal block with Push-in connection and plug-in miniature relay with multi-layer gold contact, for mounting on DIN rail NS 35/7,5, 2 changeover contacts, input voltage 24 V DC

---

## PLC-RSC- 24DC/21-21AU - Relay Module

2967125

<https://www.phoenixcontact.com/us/products/2967125>



PLC-INTERFACE, consisting of PLC-BSC.../21 basic terminal block with screw connection and plug-in miniature relay with multi-layer gold contact, for mounting on DIN rail NS 35/7,5, 2 changeover contacts, input voltage 24 V DC

# PLC-V8L/FLK14/OUT/M - System connection



2304306

<https://www.phoenixcontact.com/us/products/2304306>

## PLC-RPT- 24DC/ 1IC/ACT - Relay Module

2900298

<https://www.phoenixcontact.com/us/products/2900298>



PLC-INTERFACE for high switch-on currents, consisting of PLC-BPT.../1 IC/ACT basic terminal block with push-in connection and plug-in miniature relay, for mounting on DIN rail NS 35/7,5, max. switch-on current up to 130 A, 1 N/O contact, input voltage 24 V DC

---

## PLC-RSC- 24DC/ 1IC/ACT - Relay Module

2967604

<https://www.phoenixcontact.com/us/products/2967604>



PLC-INTERFACE for high switch-on currents, consisting of PLC-BSC.../1 IC/ACT basic terminal block with screw connection and plug-in miniature relay, for mounting on DIN rail NS 35/7,5, max. switch-on current up to 130 A, 1 N/O contact, input voltage 24 V DC

# PLC-V8L/FLK14/OUT/M - System connection



2304306

<https://www.phoenixcontact.com/us/products/2304306>

## PLC-RSC- 24DC/ 1- 1/ACT - Relay Module

2967109

<https://www.phoenixcontact.com/us/products/2967109>



PLC-INTERFACE for output functions, consisting of PLC-BSC.../ACT basic terminal block with screw connection and plug-in miniature relay with power contact, for mounting on DIN rail NS 35/7,5, 2 N/O contacts (1-1), input voltage 24 V DC

---

## PLC-OSC- 24DC/ 24DC/ 5/ACT - Solid-state relay module

2982786

<https://www.phoenixcontact.com/us/products/2982786>



PLC-INTERFACE for output functions, consisting of PLC-BSC.../ACT basic terminal block with screw connection and plug-in miniature solid-state relay, for mounting on DIN rail NS 35/7,5, 1 N/O contact, input: 24 V DC, output: 3 ... 33 V DC/5 A

# PLC-V8L/FLK14/OUT/M - System connection



2304306

<https://www.phoenixcontact.com/us/products/2304306>

## PLC-OSC- 24DC/230AC/ 2/ACT - Solid-state relay module

2982760

<https://www.phoenixcontact.com/us/products/2982760>



PLC-INTERFACE for output functions, consisting of PLC-BSC.../ACT basic terminal block with screw connection and plug-in miniature solid-state relay, for mounting on DIN rail NS 35/7,5, 1 N/O contact, input: 24 V DC, output: 24 - 253 V AC/2 A

---

## PLC-RSC- 24DC/21-21/MS - Relay Module

2910502

<https://www.phoenixcontact.com/us/products/2910502>



PLC-INTERFACE, consisting of a relay base and pluggable power contact relay with manual operation, integrated status LED and freewheeling diode, Screw connection, 2 changeover contacts, Freewheeling diode, Input voltage: 24 V DC

# PLC-V8L/FLK14/OUT/M - System connection



2304306

<https://www.phoenixcontact.com/us/products/2304306>

## PLC-RSC- 24DC/21-21AU/MS - Relay Module

2910507

<https://www.phoenixcontact.com/us/products/2910507>



PLC-INTERFACE, consisting of a relay base and pluggable multilayer gold contact relay with manual operation, integrated status LED and freewheeling diode, Screw connection, 2 changeover contacts, Freewheeling diode, Input voltage: 24 V DC

---

## PLC-RSC- 24DC/21HC/MS - Relay Module

2910514

<https://www.phoenixcontact.com/us/products/2910514>



PLC-INTERFACE, consisting of a relay base and pluggable power contact relay with manual operation, integrated status LED and freewheeling diode, Screw connection, 1 changeover contact, Polarity protection diode, Freewheeling diode, Input voltage: 24 V DC



# PLC-V8L/FLK14/OUT/M - System connection



2304306

<https://www.phoenixcontact.com/us/products/2304306>

## PLC-RPT- 24DC/21-21/MS - Relay Module

2910519

<https://www.phoenixcontact.com/us/products/2910519>



PLC-INTERFACE, consisting of a relay base and pluggable power contact relay with manual operation, integrated status LED and freewheeling diode, Push-in connection, 2 changeover contacts, Freewheeling diode, Input voltage: 24 V DC

---

## PLC-RPT- 24DC/21-21AU/MS - Relay Module

2910524

<https://www.phoenixcontact.com/us/products/2910524>



PLC-INTERFACE, consisting of a relay base and pluggable multilayer gold contact relay with manual operation, integrated status LED and freewheeling diode, Push-in connection, 2 changeover contacts, Freewheeling diode, Input voltage: 24 V DC

# PLC-V8L/FLK14/OUT/M - System connection



2304306

<https://www.phoenixcontact.com/us/products/2304306>

## PLC-RPT- 24DC/21HC/MS - Relay Module

2910530

<https://www.phoenixcontact.com/us/products/2910530>



PLC-INTERFACE, consisting of a relay base and pluggable power contact relay with manual operation, integrated status LED and freewheeling diode, Push-in connection, 1 changeover contact, Polarity protection diode, Freewheeling diode, Input voltage: 24 V DC

---

Phoenix Contact 2024 © - all rights reserved

<https://www.phoenixcontact.com>

Phoenix Contact USA  
586 Fulling Mill Road  
Middletown, PA 17057, United States  
(+717) 944-1300  
[info@phoenixcon.com](mailto:info@phoenixcon.com)