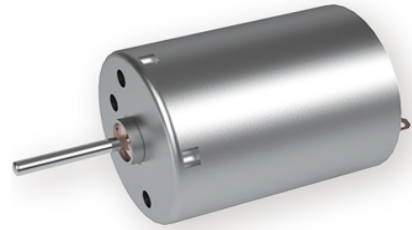




Our DC Motors are a cost-effective solution for any application. They offer simple integration and come in a variety of sizes. With endless performance combinations, we have a tailored motor solution for you.



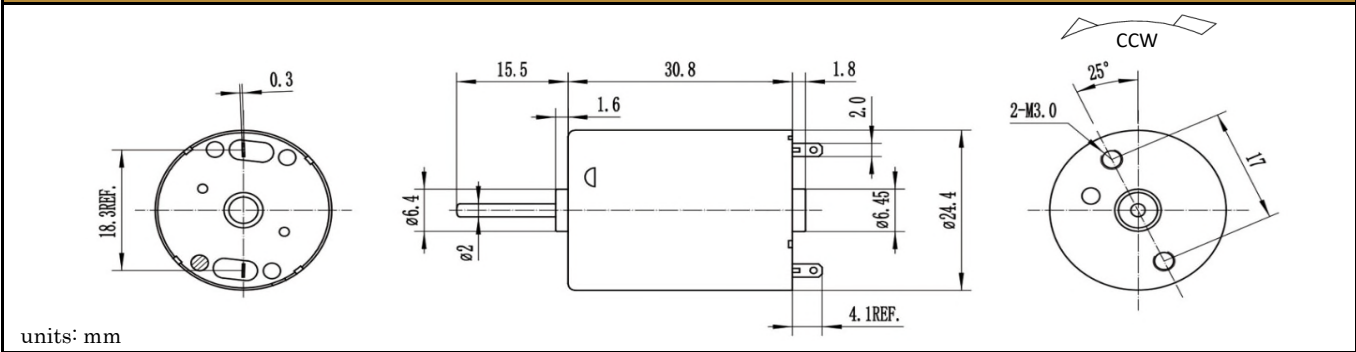
Contact Us for alternative solutions!

Specifications

Motor Type:	Carbon - Brushed
Rated Voltage:	10V DC
Rated Speed:	4,300 rpm
Rated Torque:	47 g.cm
Rated Current:	440 mA

No-Load Speed:	5,000 rpm (+/- 10%)
No-Load Current:	< 80 mA
Stall Torque:	300 g.cm
Max. Power:	4 W
Termination Style:	Terminals

Dimensions



Performance Curve

