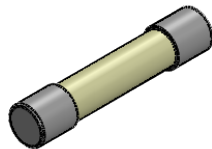


THIS IS ISSUED IN STRICT CONFIDENCE THAT IT IS NOT USED AS A BASIS FOR MANUFACTURE OR SALE AND THAT IT IS NOT COPIED, REPRINTED OR DISCLOSED TO A THIRD PARTY EITHER WHOLLY OR IN PART WITHOUT THE PRIOR WRITTEN CONSENT OF CAL TEST ELECTRONICS, INC.

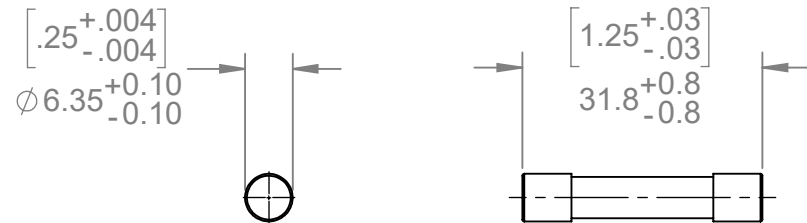
NOTES:

- MATERIAL:**
TUBE BODY: CERAMIC (NON-TRANSPARENT)
CAP: BRASS, NICKEL PLATED
ELEMENT: METAL WIRE
FILLER: QUARTZ SAND
- SPECIFICATIONS:**
RATED VOLTAGE: 1,000 V AC / DC
RATED CURRENT: SEE PART NUMBER TABLE
FUSING TIME LIMIT:
4 In: 60 ms MAX.
10 In: 6 ms MAX.
BREAKING CAPACITY: 50 KA MIN.
OPERATING TEMPERATURE: -55°C TO +125°C
- UL AND / OR TUV RECOGNIZED
- RoHS 2 COMPLIANT; EXEMPTION ANNIX III 6(c)
- WEIGHT:**
INDIVIDUAL: 1.2 g/pc



ISOMETRIC VIEW

REVISIONS			
REV.	DESCRIPTION	DATE	APPROVED
-	CLASS A RELEASED	3/14/18	
A	REVISED NOTE 2. BREAKING CAPACITY WAS 10 KA MIN. CONVERTED TO SW FORMAT	1/17/2019	
B	ADDED 2.0 A FUSE TO MODEL NUMBER TABLE	7/18/2019	



CT4049-2.0A	2.0 A	-
CT4049-1.5A	1.5 A	-
CT4049-1.0A	1.0 A	-
CT4049-0.5A	0.5 A	-
MODEL NUMBER	CURRENT RATING	NOTES / REFERENCE
MODEL NUMBER TABLE		

METRIC

UNLESS OTHERWISE SPECIFIED DIMENSIONS ARE IN MILLIMETERS TOLERANCES ARE:
PER DIN ISO 2768m

PROJECT NO.

C306

Cal Test Electronics

22820 Savi Ranch Parkway
Yorba Linda, CA 92887

THIRD ANGLE PROJECTION

DO NOT SCALE DRAWING

APPROVALS

DATE

TITLE

**FUSE, MINATURE, CERAMIC, 6X32,
1000 V, VERY FAST-ACTING**

DRAWN
WDH

3/14/2018

CHECKER
B.Hansen

3/14/2018

MATERIAL
SEE NOTES

TREATMENT
NONE

ENGR.

DESIGN ACTIVITY

FINISH
NONE

SIZE

A

CAGE CODE

43F45

DWG. NO.

P404900

REV.

B

SCALE 1:1

SHEET 1 OF 1

